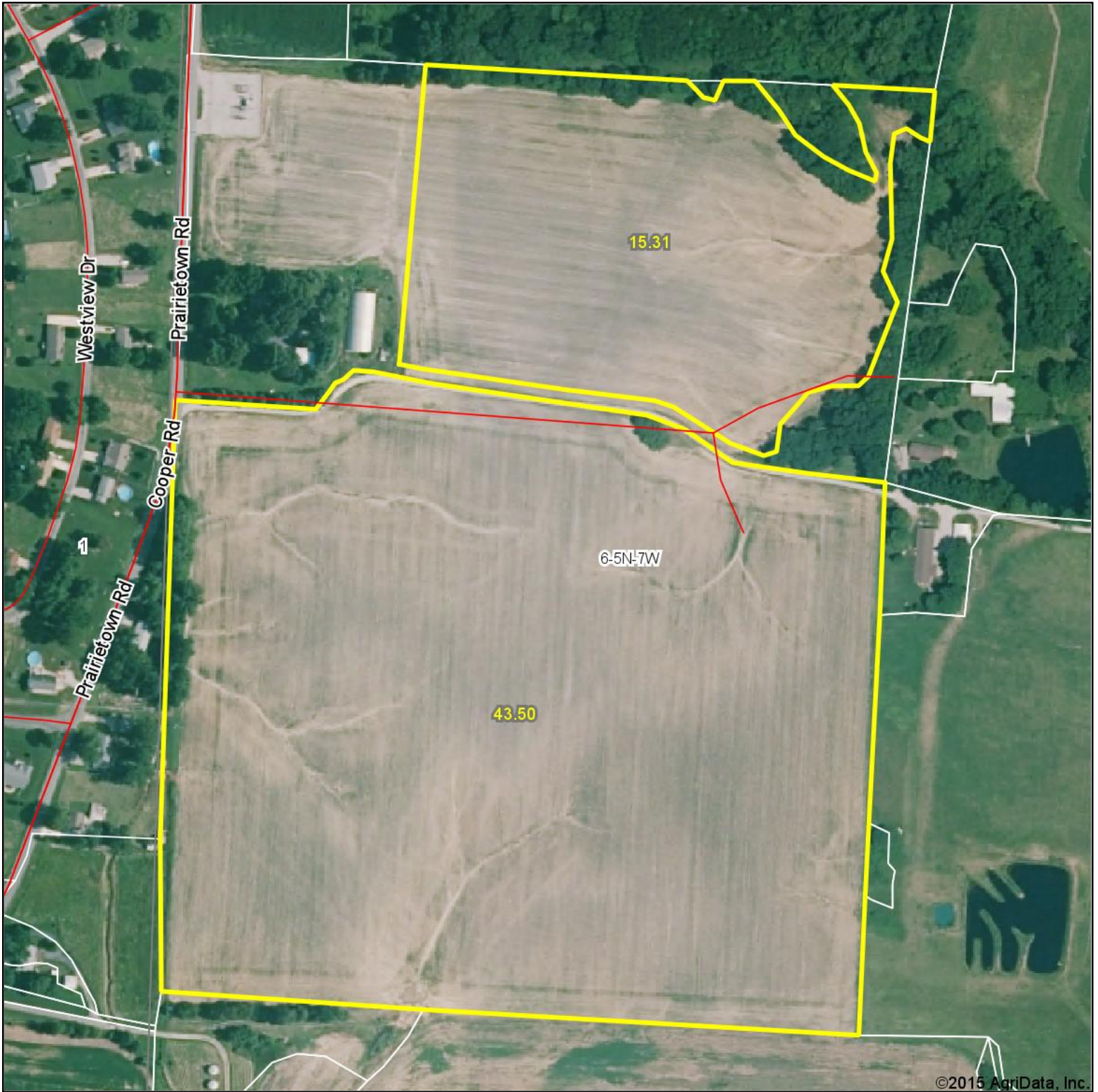


Aerial Map



TARRANT & HARMAN
REAL ESTATE AND AUCTION CO
residential - commercial - agricultural

Maps Provided By:



© AgriData, Inc. 2014 www.AgriDataInc.com

6-5N-7W
Madison County
Illinois

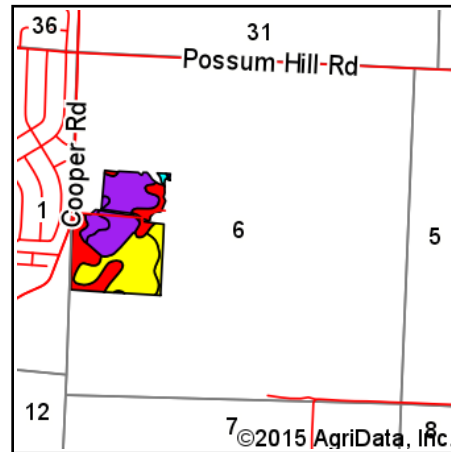
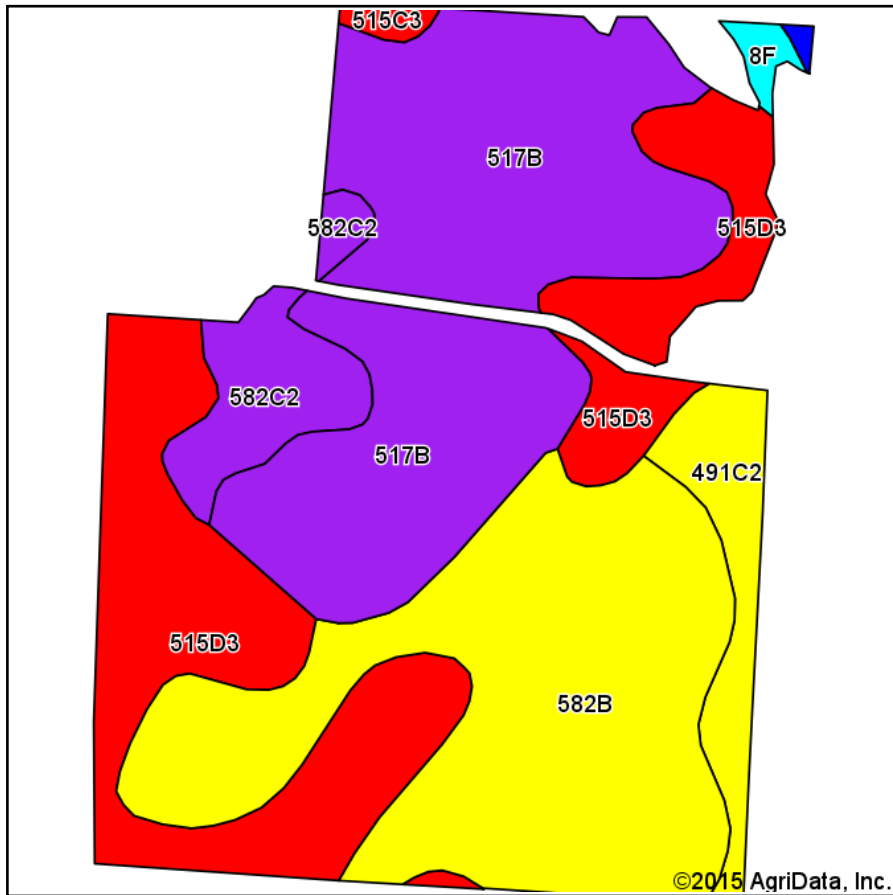
map center: 38° 54' 41.32, 89° 55' 28.63

scale: 3786



7/20/2015

Soil Map



State: **Illinois**
 County: **Madison**
 Location: **6-5N-7W**
 Township: **Hamel**
 Acres: **58.81**
 Date: **7/20/2015**



TARRANT & HARMAN
 REAL ESTATE AND AUCTION CO.
residential - commercial - agricultural

Maps Provided By:



Soils data provided by USDA and NRCS.

Area Symbol: IL119, Soil Area Version: 9

Code	Soil Description	Acres	Percent of field	Il. State Productivity Index Legend	Subsoil rooting a	Corn Bu/A	Soybeans Bu/A	Wheat Bu/A	Oats Bu/A b	Sorghum c Bu/A	Alfalfa d hay, T/A	Grass-legume e hay, T/A	Crop productivity index for optimum management
**517B	Marine silt loam, 2 to 5 percent slopes	19.54	33.2%		FAV	**143	**45	**55	0	**112	**3.36	0.00	**103
**582B	Homen silt loam, 2 to 5 percent slopes	17.77	30.2%		FAV	**149	**47	**55	0	**113	**3.72	0.00	**108
**515D3	Bunkum silty clay loam, 10 to 18 percent slopes, severely eroded	14.53	24.7%		FAV	**118	**41	**45	0	**92	**3.15	0.00	**89
**582C2	Homen silt loam, 5 to 10 percent slopes, eroded	3.23	5.5%		FAV	**140	**44	**52	0	**106	**3.50	0.00	**101
**491C2	Ruma silt loam, 5 to 10 percent slopes, eroded	2.90	4.9%		FAV	**151	**45	**56	0	**113	**4.55	0.00	**108
**8F	Hickory silt loam, 18 to 35 percent slopes	0.40	0.7%		FAV	**86	**29	**35	**40	0	**2.85	0.00	**65
**515C3	Bunkum silty clay loam, 5 to 10 percent slopes, severely eroded	0.34	0.6%		FAV	**126	**43	**48	0	**97	**3.35	0.00	**95
3415A	Orion silt loam, 0 to 2 percent slopes, frequently flooded	0.10	0.2%		FAV	180	57	66	89	0	0.00	5.02	131
Weighted Average						138.4	44.5	52.3	0.4	106	3.47	0.01	100.9

Area Symbol: IL119, Soil Area Version: 9

Table: Optimum Crop Productivity Ratings for Illinois Soil by K.R. Olson and J.M. Lang, Office of Research, ACES, University of Illinois at Champaign-Urbana. Version: 1/2/2012 Amended Table S2 B811 (Updated 1/10/2012)

Crop yields and productivity indices for optimum management (B811) are maintained at the following NRES web site:

<https://www.ideals.illinois.edu/handle/2142/1027/>

** Indexes adjusted for slope and erosion according to Bulletin 811 Table S3

a UNF = unfavorable; FAV = favorable

b Soils in the southern region were not rated for oats and are shown with a zero "0".

c Soils in the northern region or in both regions were not rated for grain sorghum and are shown with a zero "0".

d Soils in the poorly drained group were not rated for alfalfa and are shown with a zero "0".

e Soils in the well drained group were not rated for grass-legume and are shown with a zero "0".