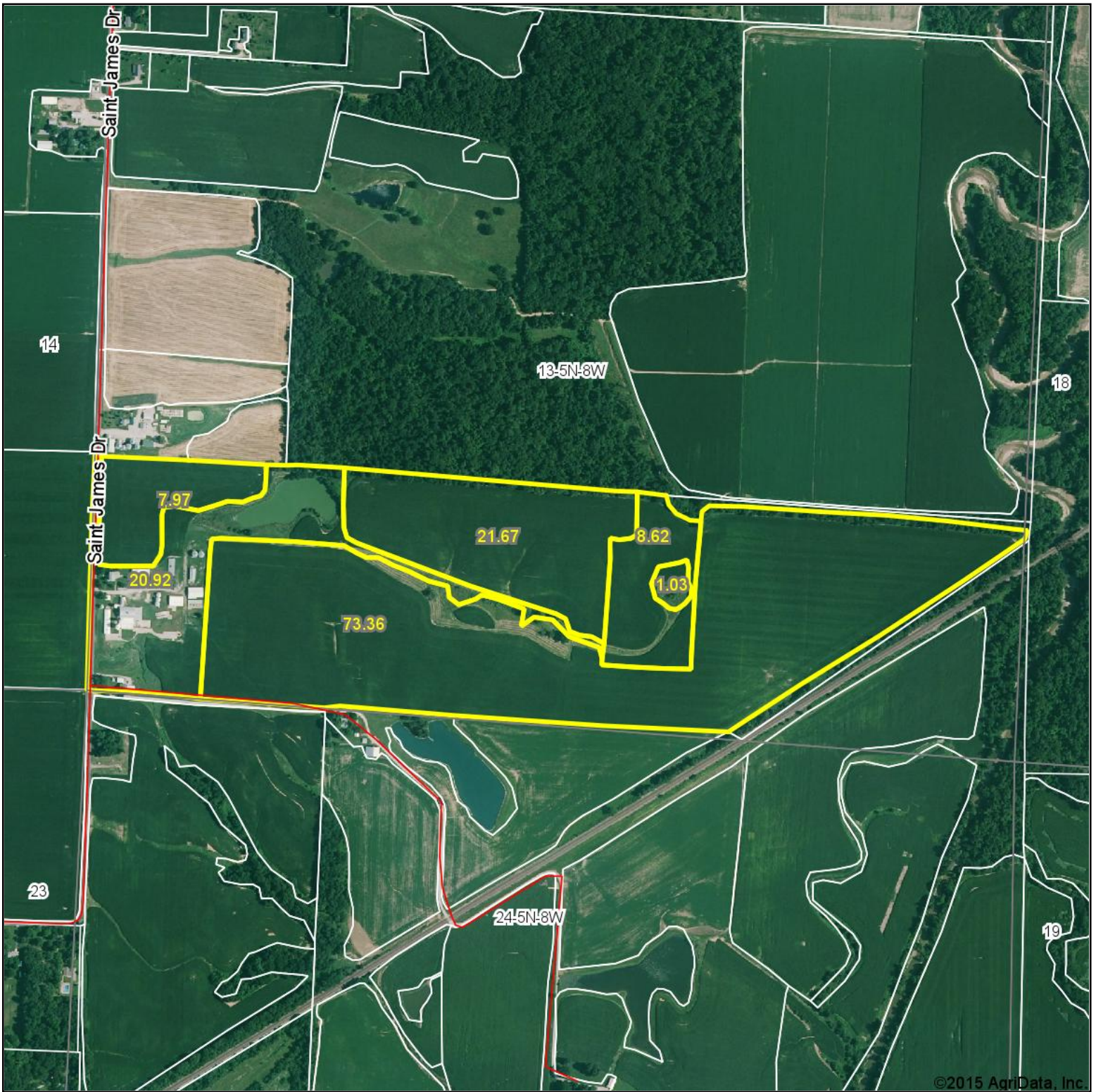


Aerial Map



TARRANT & HARMAN
REAL ESTATE AND AUCTION CO.
residential - commercial - agricultural

Maps Provided By:



© AgriData, Inc. 2014 www.AgriDataInc.com

13-5N-8W
Madison County
Illinois

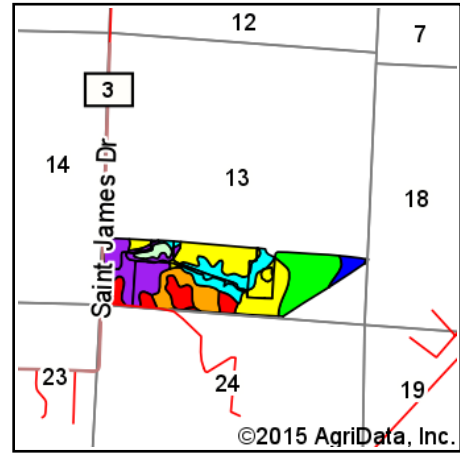
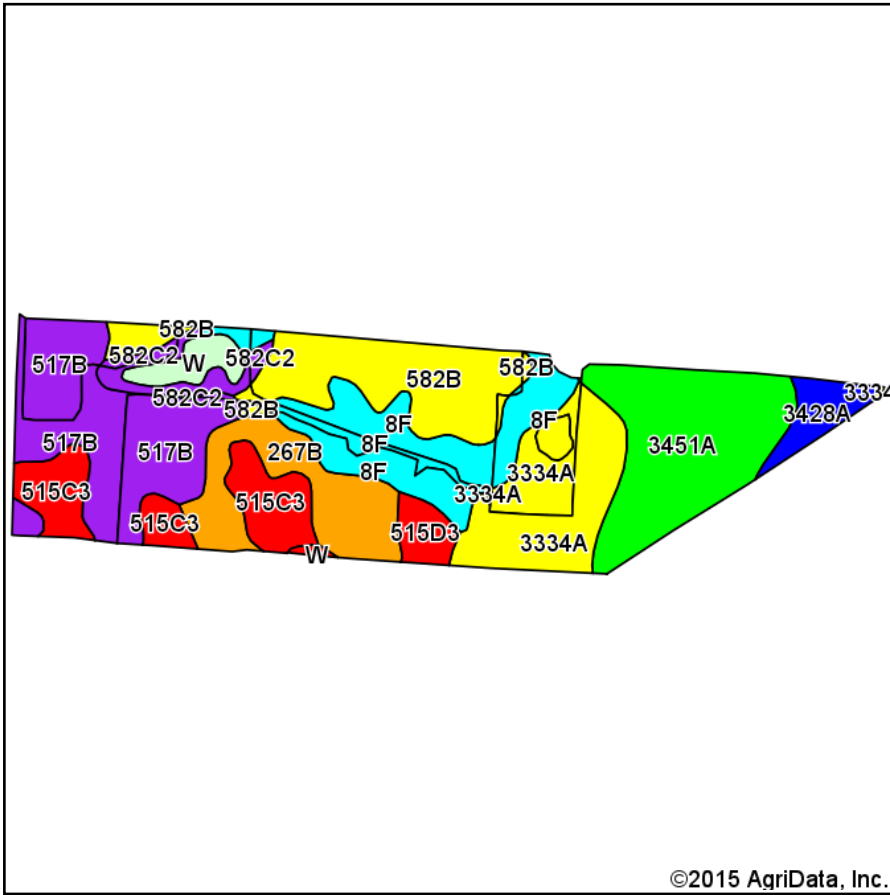
map center: 38° 52' 44.1, 89° 56' 14.08

scale: 9993



7/20/2015

Soil Map



State: **Illinois**
 County: **Madison**
 Location: **13-5N-8W**
 Township: **Fort Russell**
 Acres: **133.57**
 Date: **7/20/2015**



TARRANT & HARMAN
 REAL ESTATE AND AUCTION CO.
residential - commercial - agricultural

Maps Provided By:



© AgriData, Inc. 2014 www.AgriDataInc.com



Soils data provided by USDA and NRCS.

Area Symbol: IL119, Soil Area Version: 9

Code	Soil Description	Acres	Percent of field	Il. State Productivity Index Legend	Subsoil rooting a	Corn Bu/A	Soybeans Bu/A	Wheat Bu/A	Oats Bu/A b	Sorghum c Bu/A	Alfalfa d hay, T/A	Grass-legume e hay, T/A	Crop productivity index for optimum management
**517B	Marine silt loam, 2 to 5 percent slopes	23.01	17.2%		FAV	**143	**45	**55	0	**112	**3.36	0.00	**103
3451A	Lawson silt loam, 0 to 2 percent slopes, frequently flooded	21.86	16.4%		FAV	190	61	73	97	0	0.00	5.77	140
**582B	Homen silt loam, 2 to 5 percent slopes	17.80	13.3%		FAV	**149	**47	**55	0	**113	**3.72	0.00	**108
**8F	Hickory silt loam, 18 to 35 percent slopes	16.94	12.7%		FAV	**86	**29	**35	**40	0	**2.85	0.00	**65
3334A	Birds silt loam, 0 to 2 percent slopes, frequently flooded	16.62	12.4%		FAV	157	51	61	75	0	4.89	0.00	117
**267B	Caseyville silt loam, 2 to 5 percent slopes	12.70	9.5%		FAV	**169	**51	**64	0	**123	0.00	**5.22	**125
**515C3	Bunkum silty clay loam, 5 to 10 percent slopes, severely eroded	11.42	8.5%		FAV	**126	**43	**48	0	**97	**3.35	0.00	**95
3428A	Coffeen silt loam, 0 to 2 percent slopes, frequently flooded	3.65	2.7%		FAV	181	57	68	90	0	0.00	5.39	132
**582C2	Homen silt loam, 5 to 10 percent slopes, eroded	3.50	2.6%		FAV	**140	**44	**52	0	**106	**3.50	0.00	**101
**515D3	Bunkum silty clay loam, 10 to 18 percent slopes, severely eroded	3.04	2.3%		FAV	**118	**41	**45	0	**92	**3.15	0.00	**89
W	Water	3.03	2.3%										
Weighted Average						144.2	46.2	55.2	32.7	59.2	2.49	1.59	106.1

Area Symbol: IL119, Soil Area Version: 9