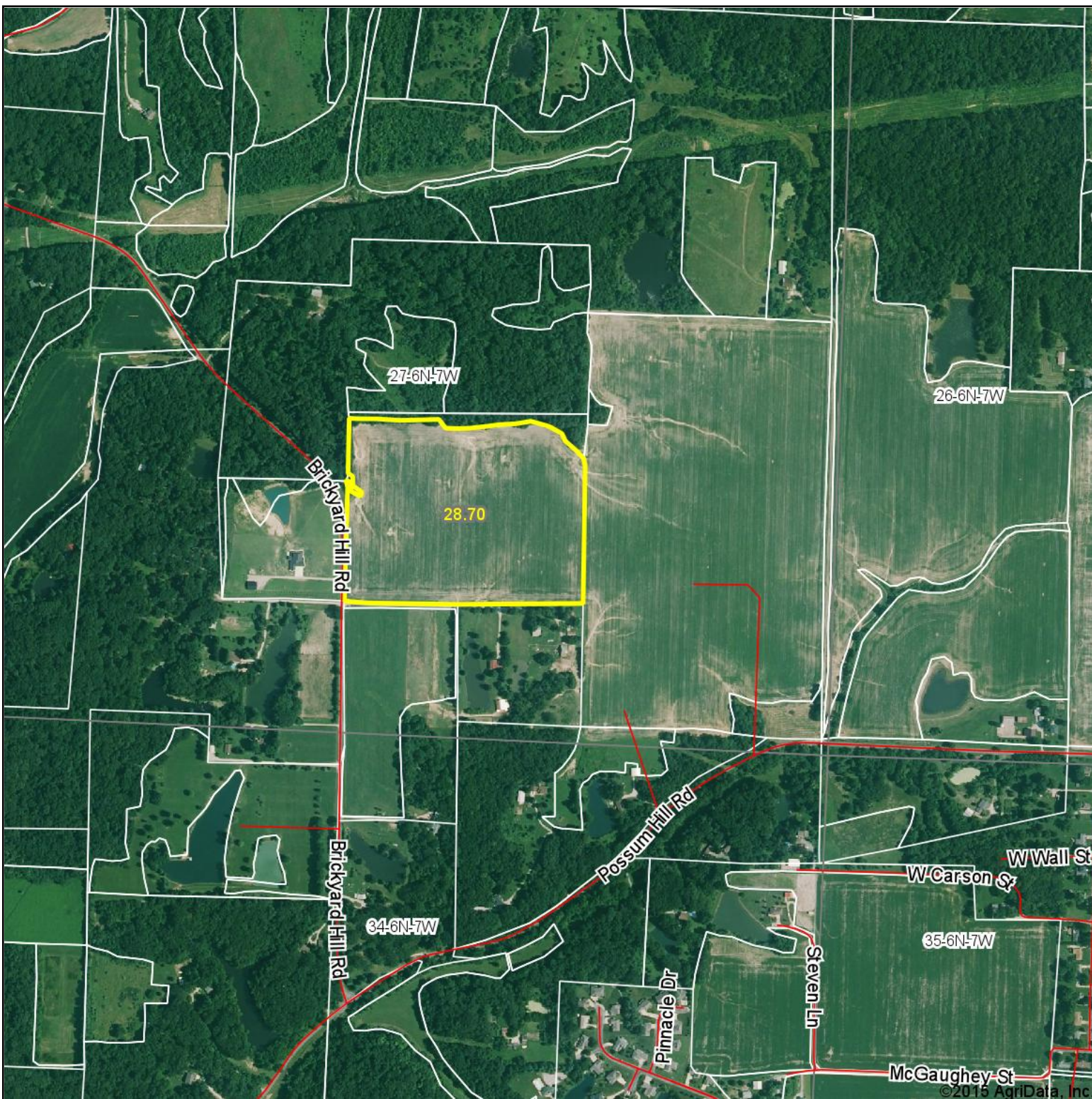


Aerial Map



TARRANT & HARMAN
REAL ESTATE AND AUCTION CO.
residential - commercial - agricultural

Maps Provided By:

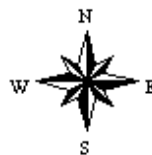


© AgriData, Inc. 2014 www.AgriDataInc.com

27-6N-7W
Madison County
Illinois

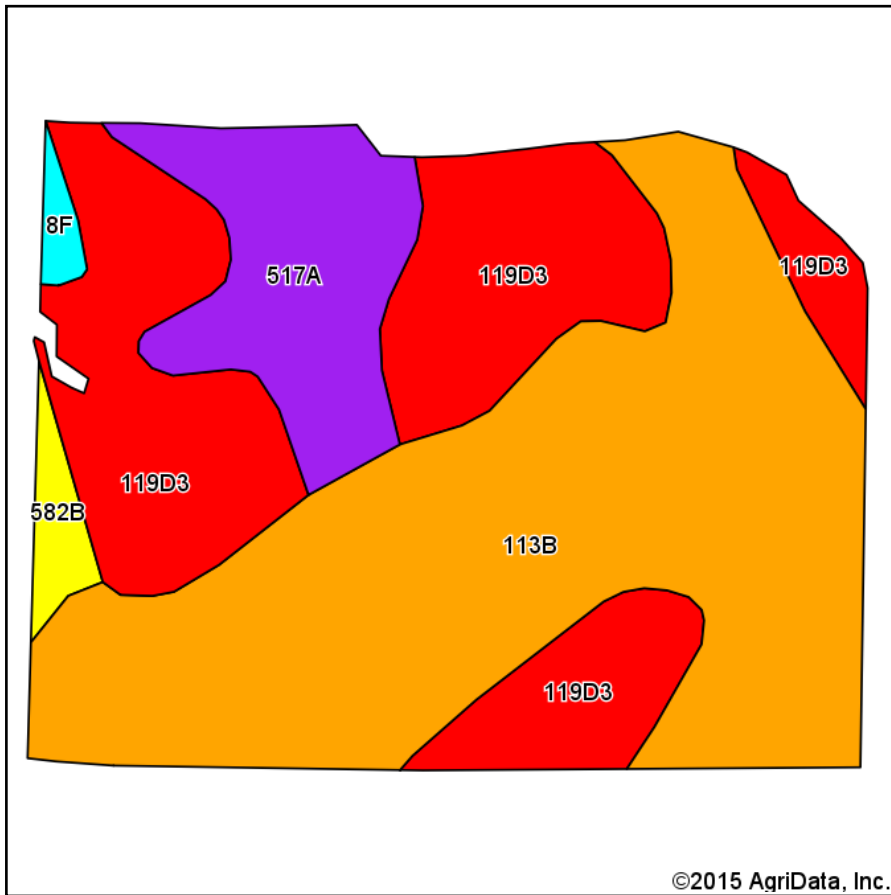
map center: 38° 56' 9.26, 89° 51' 23.08

scale: 9783

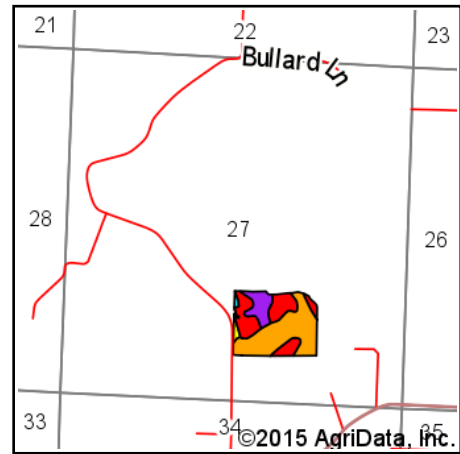


7/20/2015

Soil Map



Soils data provided by USDA and NRCS.



State: **Illinois**
 County: **Madison**
 Location: **27-6N-7W**
 Township: **Omphgent**
 Acres: **28.7**
 Date: **7/20/2015**



TARRANT & HARMAN
 REAL ESTATE AND AUCTION CO.
residential · commercial · agricultural

Maps Provided By:



Area Symbol: IL119, Soil Area Version: 9

Code	Soil Description	Acres	Percent of field	Il. State Productivity Index Legend	Subsoil rooting ^a	Corn Bu/A	Soybeans Bu/A	Wheat Bu/A	Oats Bu/A ^b	Sorghum ^c Bu/A	Alfalfa ^d hay, T/A	Grass-legume ^e hay, T/A	Crop productivity index for optimum management
**113B	Oconee silt loam, 2 to 5 percent slopes	14.70	51.2%		FAV	**162	**50	**62	0	**118	0.00	**5.22	**118
**119D3	Elco silty clay loam, 10 to 18 percent slopes, severely eroded	9.64	33.6%		FAV	**122	**40	**48	**61	0	**3.45	0.00	**91
517A	Marine silt loam, 0 to 2 percent slopes	3.59	12.5%		FAV	144	45	56	0	113	3.39	0.00	104
**582B	Homen silt loam, 2 to 5 percent slopes	0.52	1.8%		FAV	**149	**47	**55	0	**113	**3.72	0.00	**108
**8F	Hickory silt loam, 18 to 35 percent slopes	0.25	0.9%		FAV	**86	**29	**35	**40	0	**2.85	0.00	**65
Weighted Average						145.4	45.8	56.2	20.8	76.6	1.68	2.67	106.5

Area Symbol: IL119, Soil Area Version: 9

Table: Optimum Crop Productivity Ratings for Illinois Soil by K.R. Olson and J.M. Lang, Office of Research, ACES, University of Illinois at Champaign-Urbana. Version: 1/2/2012 Amended Table S2 B811 (Updated 1/10/2012)

Crop yields and productivity indices for optimum management (B811) are maintained at the following NRES web site:

<https://www.ideals.illinois.edu/handle/2142/1027/>

** Indexes adjusted for slope and erosion according to Bulletin 811 Table S3

^a UNF = unfavorable; FAV = favorable

^b Soils in the southern region were not rated for oats and are shown with a zero "0".

^c Soils in the northern region or in both regions were not rated for grain sorghum and are shown with a zero "0".

^d Soils in the poorly drained group were not rated for alfalfa and are shown with a zero "0".

^e Soils in the well drained group were not rated for grass-legume and are shown with a zero "0".

Soils data provided by USDA and NRCS. Soils data provided by University of Illinois at Champaign-Urbana.

*c: Using Capabilities Class Dominant Condition Aggregation Method