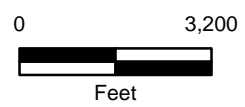
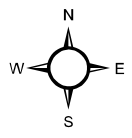
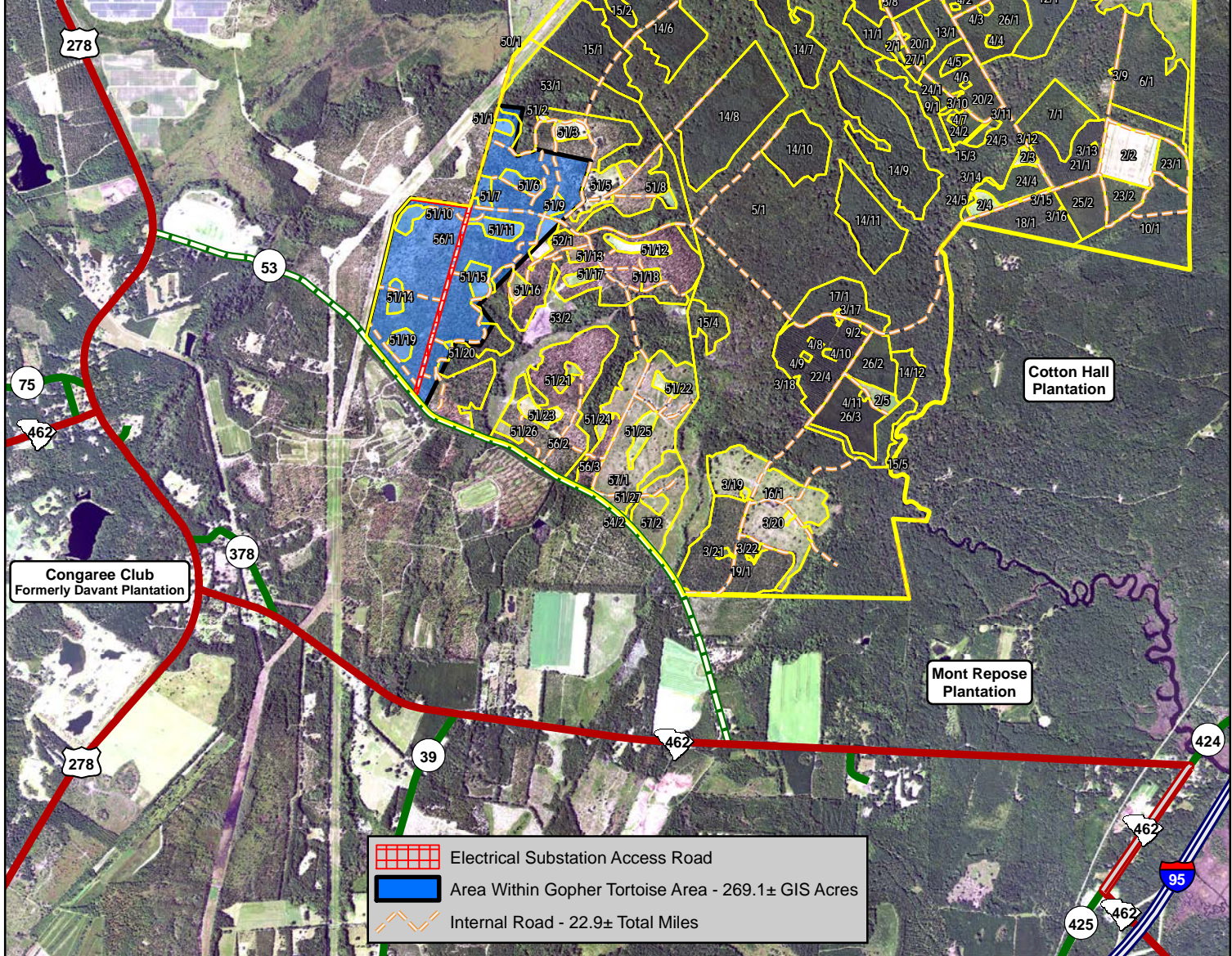


Stand	Timber Type	Non-Timber Type	Primary Species	Est Year	Acres
1	Non-Timber	Electrical ROW			40.4
2	Non-Timber	Field			45.7
3	Non-Timber	Open			13.1
4	Bay/Pond Hardwood		Mixed Hardwood		11.5
5	Bottomland Hardwood		Mixed Hardwood		1,223.2
6	Hardwood Regeneration		Mixed Hardwood	1997	58.2
7	Hardwood Regeneration		Mixed Hardwood	2005	29.0
8	Hardwood Regeneration		Mixed Hardwood	2018	98.4
9	Hardwood Regeneration		Mixed Hardwood		2.8
10	Pine-Hardwood Flat				54.5
11	Pine-Hardwood Regeneration			1998	13.0
12	Pine-Hardwood Regeneration			1999	31.6
13	Pine-Hardwood Regeneration			2000	17.1
14	Pine-Hardwood Regeneration				504.2
15	Pine Flat		Mixed Pine		87.2
16	Cutover			2019	70.4
17	Planted Pine		Loblolly	1993	26.6
18	Planted Pine		Loblolly	1997	30.2
19	Planted Pine		Loblolly	1999	61.7
20	Planted Pine		Loblolly	2003	39.0
21	Planted Pine		Loblolly	2004	27.8
22	Planted Pine		Loblolly	2005	138.5
23	Planted Pine		Longleaf	2009	24.8
24	Planted Pine		Longleaf	2013	32.3
25	Cutover				50.9
26	Cutover				79.4
27	Sweetgum Plantation		Sweetgum		1.4
50	Non-Timber	Electrical ROW			5.6
51	Non-Timber	Open			122.2
52	Bay/Pond Hardwood		Mixed Hardwood		1.7
53	Bottomland Hardwood		Mixed Hardwood		259.8
54	Pine-Hardwood Flat				8.1
56	Pine Upland		Loblolly		484.1
57	Planted Pine		Loblolly	2017	101.4
Total					3,795.8



2019 Aerial Photography Map
 Glover Real Estate, LLC
 Slater Tract
 3,795.8± GIS Acres
 Jasper County, SC
 March 06, 2020